



Noise Monitoring Result

Day Time (0700 - 1900hrs on normal weekdays)

Location: M1a - Harbour Road Sports Centre

Date	Time	Weather	Measurement Noise Level			Baseline Level	Construction Noise Level	Limit Level
			Leq	L10	L90	Leq	Leq	Leq
Unit: dB(A), (30-min)								
29/05/12	11:20	Cloudy	72.2	74.1	66.6	72	72	75
07/06/12	15:28	Fine	71.3	73.7	66.5	72	71	75
12/06/12	08:06	Cloudy	72.2	74.9	67.1	72	72	75
21/06/12	11:00	Fine	71.2	74.3	66.1	72	71	75
26/06/12	08:10	Fine	71.9	74.7	66.9	72	72	75

Location: M2b - Noon-day gun area

Date	Time	Weather	Measurement Noise Level			Baseline Level	Construction Noise Level	Limit Level
			Leq	L10	L90	Leq	Leq	Leq
Unit: dB(A), (30-min)								
29/05/12	15:40	Cloudy	70.5	71.8	68.9	68	67	75
07/06/12	16:15	Fine	68.7	69.9	67.2	68	62	75
12/06/12	08:58	Cloudy	69.7	70.9	68.0	68	66	75
21/06/12	13:00	Cloudy	69.8	71.4	68.1	68	66	75
26/06/12	09:04	Cloudy	69.9	71.3	68.0	68	66	75

Location: M3a - Tung Lo Wan Fire Station

Date	Time	Weather	Measurement Noise Level			Baseline Level	Construction Noise Level	Limit Level
			Leq	L10	L90	Leq	Leq	Leq
Unit: dB(A), (30-min)								
29/05/12	10:28	Cloudy	67.3	69.0	64.8	69	67	75
07/06/12	10:38	Fine	72.8	74.2	68.1	69	71	75
12/06/12	09:40	Cloudy	67.3	69.1	64.8	69	67	75
21/06/12	13:56	Cloudy	66.8	68.7	64.1	69	67	75
26/06/12	13:28	Cloudy	67.1	68.9	64.5	69	67	75

Location: M4b - Victoria Centre

Date	Time	Weather	Measurement Noise Level			Baseline Noise Level	Construction Noise Level	Limit Level
			Leq	L10	L90	Leq	Leq	Leq
Unit: dB(A), (30min)								
29/05/12	09:42	Cloudy	69.4	70.7	67.4	67	65	75
07/06/12	11:21	Cloudy	73.4	75.6	69.8	67	72	75
12/06/12	10:28	Cloudy	72.5	73.7	70.9	67	71	75
21/06/12	14:35	Cloudy	69.6	70.7	68.2	67	66	75
26/06/12	14:11	Cloudy	71.6	73.2	69.4	67	70	75

Location: M5b - City Garden

Date	Time	Weather	Measurement Noise Level			Baseline Level	Construction Noise Level	Limit Level
			Leq	L10	L90	Leq	Leq	Leq
Unit: dB(A), (30min)								
29/05/12	08:08	Cloudy	71.6	72.8	70.1	68	69	75
07/06/12	13:00	Fine	70.6	71.8	69.3	68	67	75
12/06/12	11:10	Fine	71.0	72.3	69.2	68	68	75
21/06/12	15:20	Cloudy	70.4	71.2	69.1	68	67	75
26/06/12	14:59	Cloudy	73.2	74.3	71.2	68	72	75

Location: M6 - HK Baptist Church Henrietta Secondary School

Date	Time	Weather	Measurement Noise Level			Baseline Level	Construction Noise Level	Limit Level
			Leq	L10	L90	Leq	Leq	Leq
Unit: dB(A), (30-min)								
29/05/12	08:55	Cloudy	73.0	74.4	71.3	71	69	70
07/06/12	13:44	Fine	72.7	74.2	69.2	71	68	65
12/06/12	16:23	Cloudy	73.8	74.9	72.2	71	71	65
21/06/12	16:37	Cloudy	72.9	74.0	71.3	71	69	70
26/06/12	15:44	Cloudy	73.4	74.6	71.7	71	70	70



Noise Monitoring Result

Day Time (0700 - 1900hrs on normal weekdays)

Location: M7e - International Finance Centre (Eastern End of Podium)

Date	Time	Weather	Measurement Noise Level			Baseline Level	Construction Noise Level	Limit Level
			Leq	L10	L90	Leq	Leq	Leq
Unit: dB(A), (30-min)								
29/05/12	13:41	Cloudy	71.6	72.8	70.1	67	70	75
07/06/12	18:15	Cloudy	69.2	70.8	66.4	67	65	75
12/06/12	14:45	Cloudy	74.9	77.6	72.0	67	74	75
21/06/12	09:28	Fine	71.0	72.1	69.1	67	69	75
26/06/12	10:08	Cloudy	72.5	74.0	70.2	67	71	75

Location: M7w - International Finance Centre (Western End of Podium)

Date	Time	Weather	Measurement Noise Level			Baseline Level	Construction Noise Level	Limit Level
			Leq	L10	L90	Leq	Leq	Leq
Unit: dB(A), (30-min)								
29/05/12	14:25	Cloudy	66.2	67.9	64.2	69	66	75
07/06/12	17:33	Cloudy	65.1	66.1	63.1	69	65	75
12/06/12	14:02	Cloudy	66.3	67.5	64.2	69	66	75
21/06/12	08:45	Fine	67.2	68.1	65.8	69	67	75
26/06/12	11:00	Cloudy	68.3	69.7	66.2	69	68	75



Noise Monitoring Result

Day Time (0700 - 1900hrs on normal weekdays)

Location: M1a - Harbour Road Sports Centre

Date	Time	Weather	Measurement Noise Level			Baseline Level	Construction Noise Level	Limit Level
			Leq	L10	L90	Leq	Leq	Leq
Unit: dB(A), (30-min)								
04/07/12	09:59	Fine	72.8	75.1	68.6	72	64	75
10/07/12	09:46	Cloudy	73.0	75.5	68.5	72	65	75
19/07/12	09:42	Fine	74.3	76.8	69.8	72	70	75
25/07/12	09:57	Cloudy	72.8	75.3	67.9	72	64	75

*Due to adverse weather condition, the noise monitoring was rescheduled from 24 July 2012 to 25 July 2012.

Location: M2b - Noon-day gun area

Date	Time	Weather	Measurement Noise Level			Baseline Level	Construction Noise Level	Limit Level
			Leq	L10	L90	Leq	Leq	Leq
Unit: dB(A), (30-min)								
04/07/12	10:45	Fine	69.8	71.0	68.2	68	66	75
10/07/12	10:35	Fine	71.3	72.3	70.0	68	69	75
19/07/12	10:35	Fine	71.2	72.3	69.3	68	69	75
24/07/12	17:05	Cloudy	70.6	72.1	66.7	68	68	75

Location: M3a - Tung Lo Wan Fire Station

Date	Time	Weather	Measurement Noise Level			Baseline Level	Construction Noise Level	Limit Level
			Leq	L10	L90	Leq	Leq	Leq
Unit: dB(A), (30-min)								
04/07/12	11:30	Fine	69.1	70.0	65.3	69	57	75
10/07/12	11:25	Fine	67.6	69.3	65.3	69	68	75
19/07/12	14:00	Sunny	67.8	69.1	64.3	69	68	75
24/07/12	16:16	Cloudy	67.5	68.6	62.0	69	68	75

Location: M4b - Victoria Centre

Date	Time	Weather	Measurement Noise Level			Baseline Noise Level	Construction Noise Level	Limit Level
			Leq	L10	L90	Leq	Leq	Leq
Unit: dB(A), (30min)								
04/07/12	13:00	Fine	70.5	71.9	68.1	67	68	75
10/07/12	13:00	Fine	71.8	73.4	68.9	67	70	75
19/07/12	13:08	Sunny	72.7	74.6	69.6	67	71	75
24/07/12	15:31	Cloudy	70.0	71.7	63.8	67	67	75

Location: M5b - City Garden

Date	Time	Weather	Measurement Noise Level			Baseline Level	Construction Noise Level	Limit Level
			Leq	L10	L90	Leq	Leq	Leq
Unit: dB(A), (30min)								
04/07/12	13:47	Fine	71.4	73.1	69.1	68	69	75
10/07/12	14:30	Fine	73.7	75.9	70.9	68	72	75
19/07/12	14:55	Sunny	71.6	72.2	70.0	68	69	75
24/07/12	13:30	Cloudy	68.7	70.1	64.0	68	60	75

Location: M6 - HK Baptist Church Henrietta Secondary School

Date	Time	Weather	Measurement Noise Level			Baseline Level	Construction Noise Level	Limit Level
			Leq	L10	L90	Leq	Leq	Leq
Unit: dB(A), (30-min)								
04/07/12	14:30	Fine	73.0	74.4	71.1	71	69	70
10/07/12	15:20	Fine	72.9	74.2	71.0	71	69	70
19/07/12	15:39	Sunny	73.0	74.3	68.9	71	69	70
24/07/12	14:21	Cloudy	72.3	73.8	65.1	71	67	70



Noise Monitoring Result

Day Time (0700 - 1900hrs on normal weekdays)

Location: M7e - International Finance Centre (Eastern End of Podium)

Date	Time	Weather	Measurement Noise Level			Baseline Level	Construction Noise Level	Limit Level
			Leq	L10	L90	Leq	Leq	Leq
Unit: dB(A), (30-min)								
04/07/12	08:59	Fine	75.6	77.6	71.3	67	75	75
10/07/12	08:01	Fine	73.8	76.5	69.4	67	73	75
19/07/12	08:05	Fine	74.5	78.7	71.3	67	74	75
25/07/12	10:55	Cloudy	75.1	77.2	72.6	67	74	75

*Due to adverse weather condition, the noise monitoring was rescheduled from 24 July 2012 to 25 July 2012.

Location: M7w - International Finance Centre (Western End of Podium)

Date	Time	Weather	Measurement Noise Level			Baseline Level	Construction Noise Level	Limit Level
			Leq	L10	L90	Leq	Leq	Leq
Unit: dB(A), (30-min)								
04/07/12	08:25	Fine	67.3	68.9	64.7	69	67	75
10/07/12	08:40	Fine	67.2	68.4	65.4	69	67	75
19/07/12	08:43	Fine	68.3	69.6	65.6	69	68	75
25/07/12	11:29	Cloudy	66.9	69.6	63.9	69	67	75

*Due to adverse weather condition, the noise monitoring was rescheduled from 24 July 2012 to 25 July 2012.



Noise Monitoring Result

Day Time (0700 - 1900hrs on normal weekdays)

Location: M1a - Harbour Road Sports Centre

Date	Time	Weather	Measurement Noise Level			Baseline Level	Construction Noise Level	Limit Level
			Leq	L10	L90	Leq	Leq	Leq
Unit: dB(A), (30-min)								
31/07/12	13:55	Fine	72.8	75.0	69.0	72	64	75
07/08/12	10:25	Fine	73.8	76.5	68.5	72	69	75
14/08/12	10:30	Fine	74.7	77.0	71.0	72	71	75
23/08/12	10:28	Fine	74.0	76.5	70.0	72	69	75

Location: M2b - Noon-day gun area

Date	Time	Weather	Measurement Noise Level			Baseline Level	Construction Noise Level	Limit Level
			Leq	L10	L90	Leq	Leq	Leq
Unit: dB(A), (30-min)								
31/07/12	13:02	Fine	71.0	72.0	69.5	68	68	75
07/08/12	11:20	Fine	69.8	70.5	68.0	68	66	75
14/08/12	11:30	Fine	71.1	72.5	68.0	68	69	75
23/08/12	11:17	Fine	71.6	72.0	70.0	68	69	75

Location: M3a - Tung Lo Wan Fire Station

Date	Time	Weather	Measurement Noise Level			Baseline Level	Construction Noise Level	Limit Level
			Leq	L10	L90	Leq	Leq	Leq
Unit: dB(A), (30-min)								
31/07/12	10:10	Fine	68.9	70.0	65.5	69	52	75
07/08/12	13:00	Fine	69.2	70.1	65.4	69	59	75
14/08/12	13:00	Fine	66.8	68.5	64.0	69	67	75
23/08/12	13:15	Sunny	66.7	68.5	64.5	69	67	75

Location: M4b - Victoria Centre

Date	Time	Weather	Measurement Noise Level			Baseline Noise Level	Construction Noise Level	Limit Level
			Leq	L10	L90	Leq	Leq	Leq
Unit: dB(A), (30min)								
31/07/12	10:51	Fine	71.6	72.5	69.5	67	70	75
07/08/12	13:50	Fine	72.9	74.5	70.5	67	72	75
14/08/12	13:45	Fine	72.4	73.5	70.5	67	71	75
24/08/12	09:37	Fine	74.1	75.7	72.2	67	73	75

*Due to the equipment repair, the noise monitoring was rescheduled from 23 August 2012 to 24 August 2012

Location: M5b - City Garden

Date	Time	Weather	Measurement Noise Level			Baseline Level	Construction Noise Level	Limit Level
			Leq	L10	L90	Leq	Leq	Leq
Unit: dB(A), (30min)								
31/07/12	08:26	Fine	69.7	70.5	68.0	68	65	75
07/08/12	14:50	Fine	70.6	72.0	68.5	68	67	75
14/08/12	14:30	Fine	71.8	72.5	69.0	68	69	75
23/08/12	14:25	Sunny	71.8	73.0	70.0	68	69	75

Location: M6 - HK Baptist Church Henrietta Secondary School

Date	Time	Weather	Measurement Noise Level			Baseline Level	Construction Noise Level	Limit Level
			Leq	L10	L90	Leq	Leq	Leq
Unit: dB(A), (30-min)								
31/07/12	09:10	Fine	73.4	74.5	71.5	71	70	70
07/08/12	15:29	Fine	72.9	74.0	71.0	71	69	70
14/08/12	15:13	Fine	73.1	73.8	72.7	71	69	70
24/08/12	10:25	Fine	75.2	76.4	73.3	71	73	70

*Due to the equipment repair, the noise monitoring was rescheduled from 23 August 2012 to 24 August 2012



Noise Monitoring Result

Day Time (0700 - 1900hrs on normal weekdays)

Location: M7e - International Finance Centre (Eastern End of Podium) (Reference Station)

Date	Time	Weather	Measurement Noise Level			Baseline Level	Construction Noise Level	Limit Level
			Leq	L10	L90	Leq	Leq	Leq
Unit: dB(A), (30-min)								
31/07/12	15:29	Fine	73.0	74.5	69.5	67	72	N/A
07/08/12	08:00	Fine	69.5	71.0	65.0	67	66	N/A
14/08/12	08:00	Fine	69.4	71.0	66.5	67	66	N/A
23/08/12	08:02	Fine	72.1	73.8	70.3	67	71	N/A

Location: M7w - International Finance Centre (Western End of Podium)

Date	Time	Weather	Measurement Noise Level			Baseline Level	Construction Noise Level	Limit Level
			Leq	L10	L90	Leq	Leq	Leq
Unit: dB(A), (30-min)								
31/07/12	14:52	Fine	68.0	70.5	65.0	69	68	75
07/08/12	08:35	Fine	66.8	68.0	64.5	69	67	75
14/08/12	08:30	Fine	68.7	69.5	66.5	69	69	75
23/08/12	08:35	Fine	67.3	68.0	65.0	69	67	75

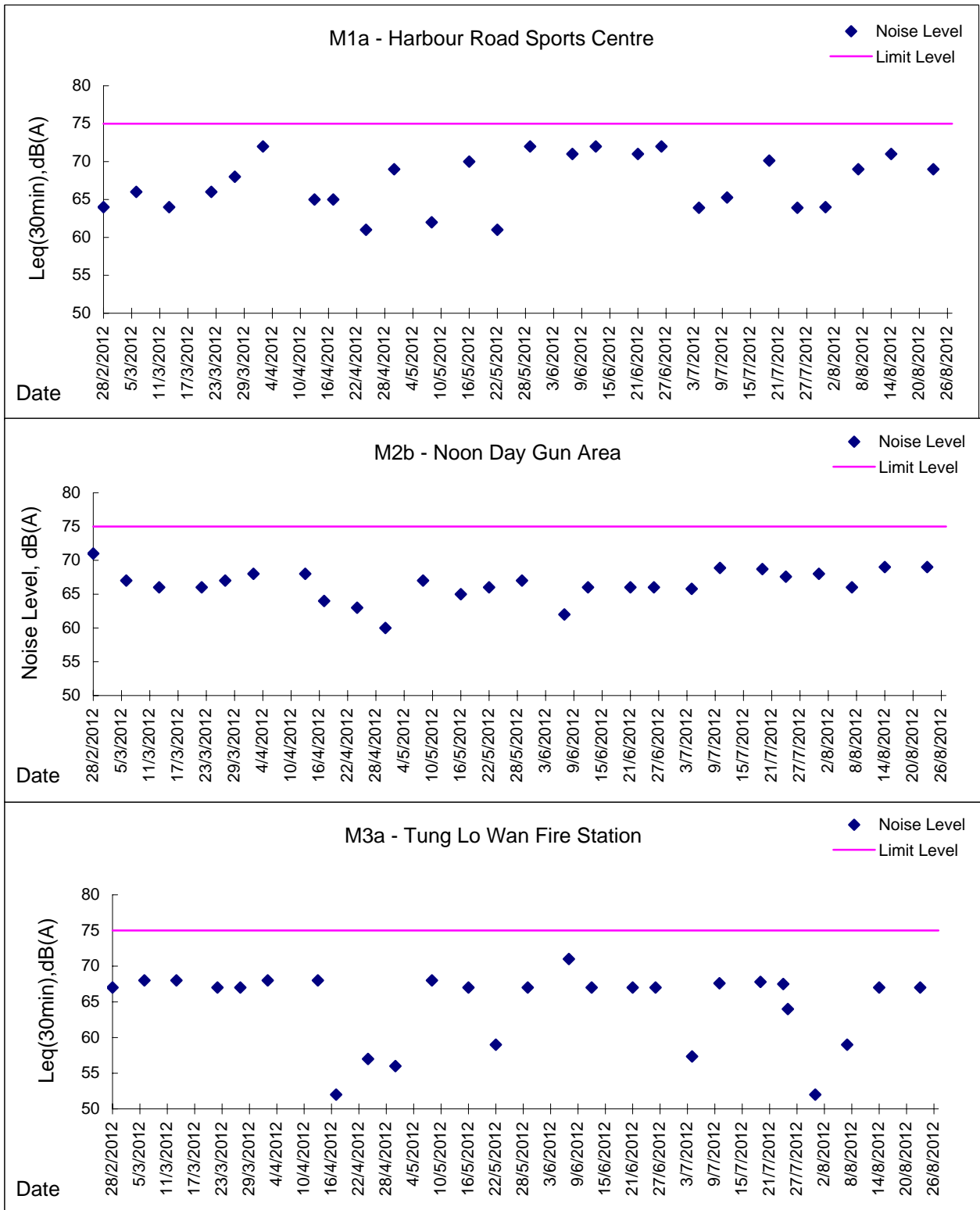
Location: M8 - City Hall

Date	Time	Weather	Measurement Noise Level			Baseline Level	Construction Noise Level	Limit Level
			Leq	L10	L90	Leq	Leq	Leq
Unit: dB(A), (30-min)								
07/08/12	09:30	Fine	65.5	71.0	59.5	64	61	70
14/08/12	09:45	Fine	63.5	64.5	57.0	64	64	70
23/08/12	09:36	Cloudy	61.3	63.0	58.0	64	61	70



Graphic Presentation of Noise Monitoring Result

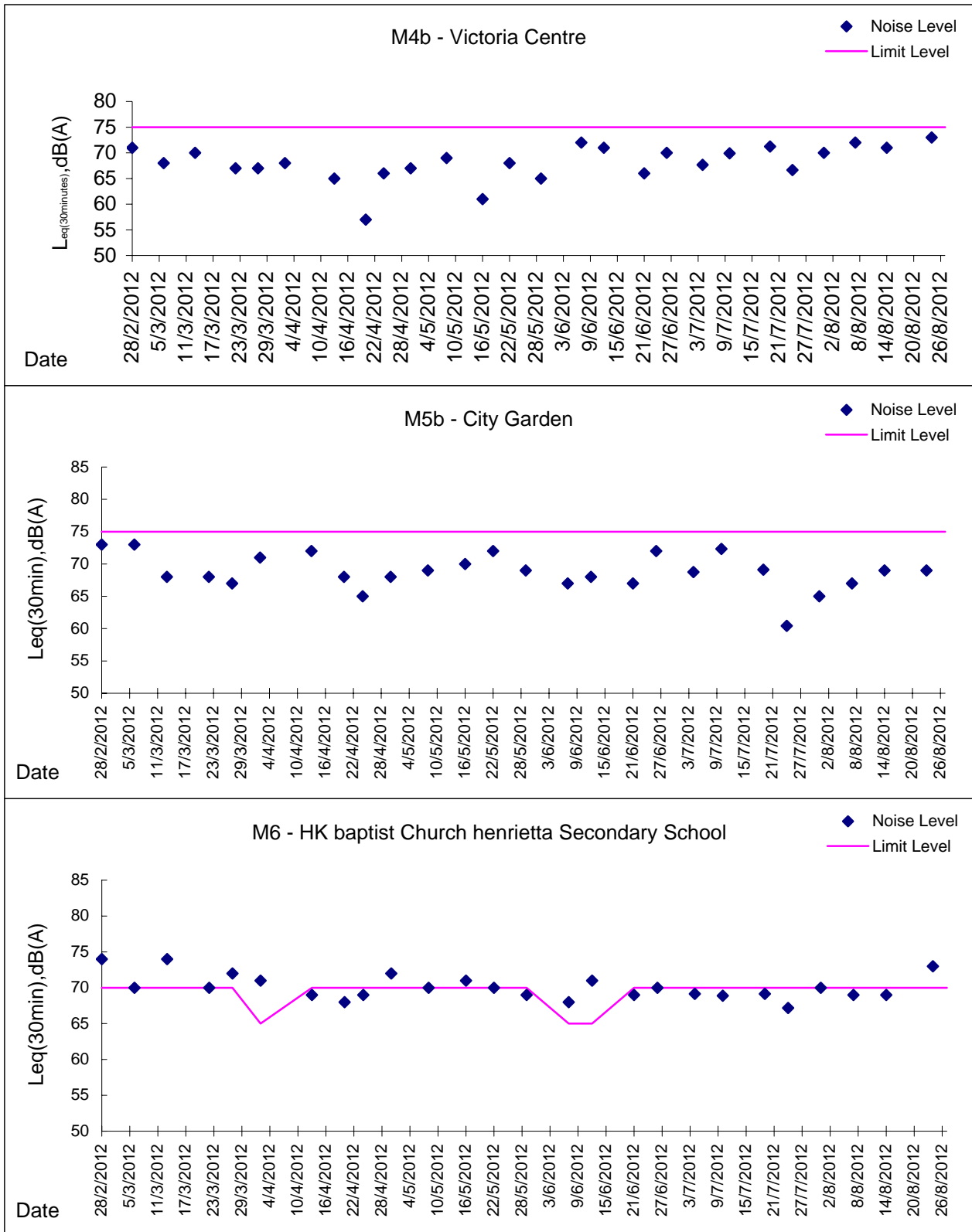
Day Time (0700 - 1900hrs on normal weekdays)





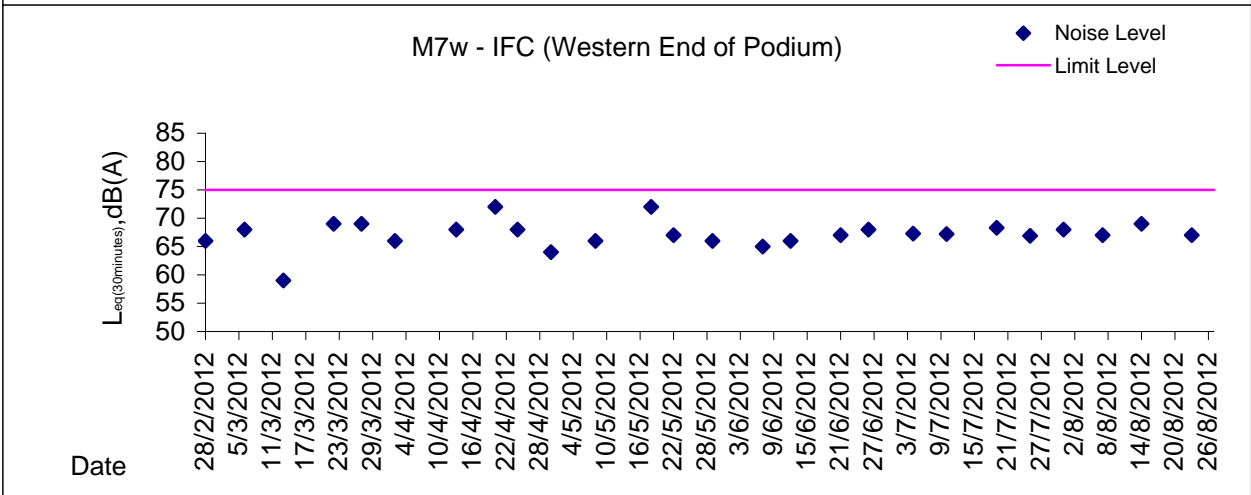
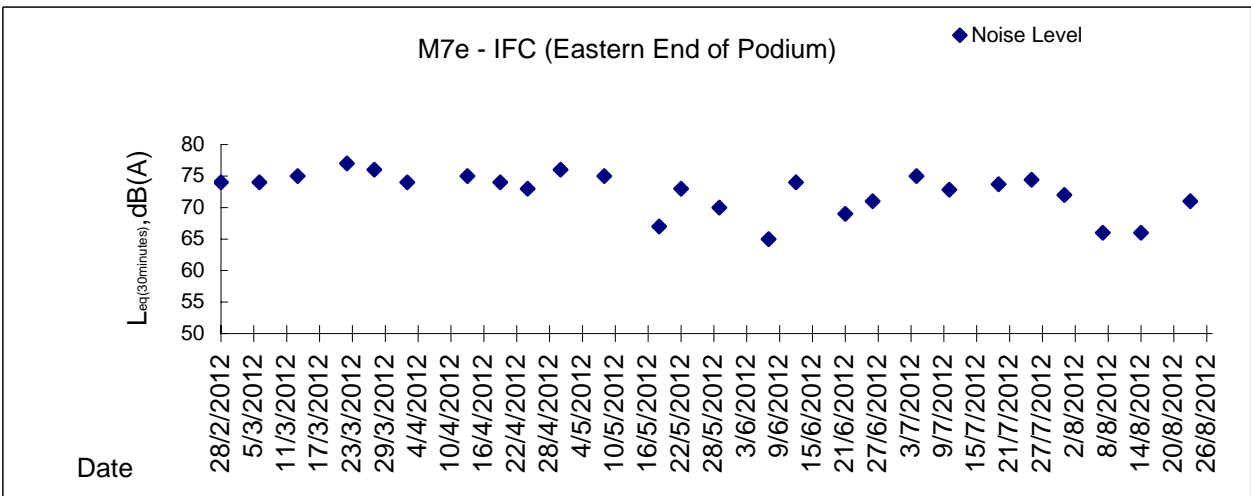
Graphic Presentation of Noise Monitoring Result

Day Time (0700 - 1900hrs on normal weekdays)





Graphic Presentation of Noise Monitoring Result
Day Time (0700 - 1900hrs on normal weekdays)



* Remark: M7e - IFC (Eastern End of Podium) is a reference monitoring station